



MACKINTOSH, Inc.
COMMERCIAL BROKERAGE

For Lease - \$13 / SF +NNN
1,594 SF with Mezzanine

Office/Warehouse Condo For Lease **5744-D Industry Lane, Frederick, Md.**



**1,594 SF Office / Warehouse Condo with Additional Large
Open Office in the Mezzanine Level. 14 ft. ceilings.**

**Quick Access to Interstate 270 & Interstate 70.
Networked Area with Phone Jacks Throughout
10' x 10' Drive-In Door in Warehouse Area, 2
Contact Listing Agent for More Information.**

All information deemed reliable, but not guaranteed.

FOR ADDITIONAL INFORMATION CONTACT:

Jody Bell - Call: 240-674-3937

or Nancy Green - Call: 301-748-3321

Mackintosh Commercial Brokerage

262 W. Patrick Street Frederick, Maryland 21701 O: 1-800-727-SOLD ext.235

Fax #: 301-846-4317

Email: Nancy@ngreen.com Website:

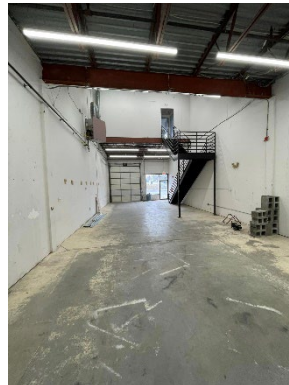
<http://www.ngreen.com/>



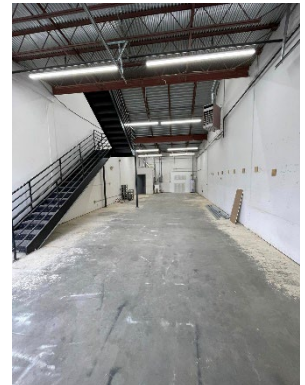
Entrance Sign



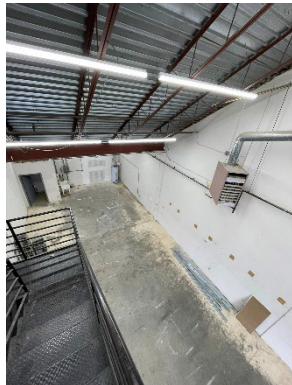
View Inside Front



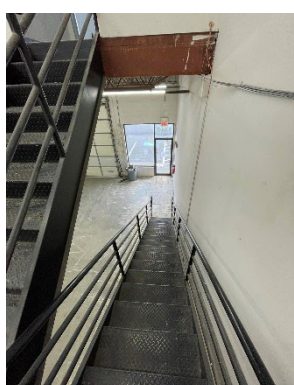
View from Rear



View from Front



View from Mezzanine



View from Stairs



View of Stairs



View Mezz. Office



Water Heater



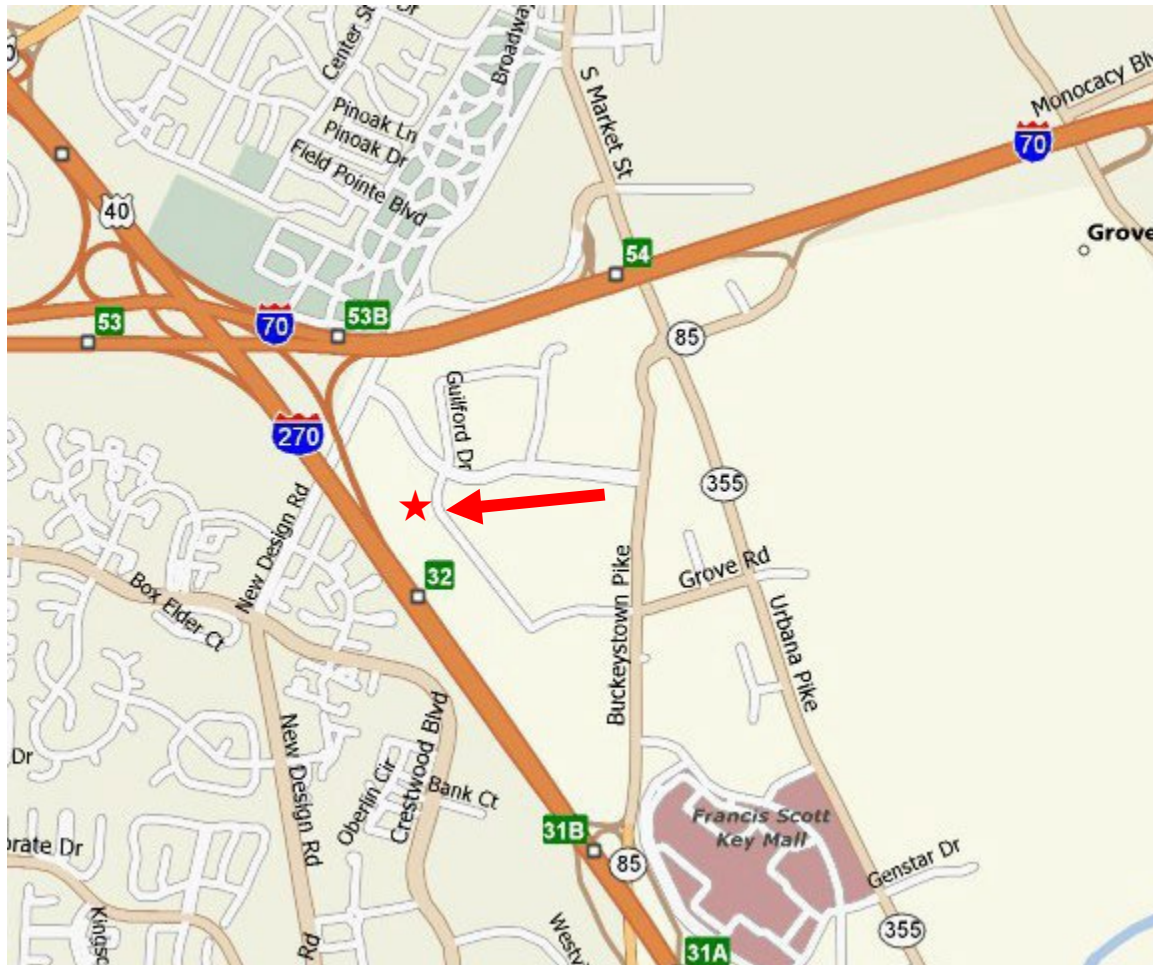
Mop Sink



Restroom



Mezz. Storage Closet



Directions:

From Market St (MD-85) turn Right on Guilford Dr, Left onto Industry Lane, Property will be on your Right shortly after the turn.

For Additional Info Call: Nancy Green- Call Toll Free 1-800-301-5901 or 240-529-0135
Mackintosh Commercial Brokerage, 262 West Patrick Street, Frederick, Maryland 21701

Fax #: (301) 846-4317 / O: 1-800-727-SOLD ext.235

Email: Nancy@ngreen.com / Website: www.ngreen.com

All information deemed reliable, but not guaranteed.