



MACKINTOSH, Inc.
COMMERCIAL BROKERAGE

**Ideal Adult Day Care / Medical
For Lease – 4,500 SF to 9,000 SF
Price Negotiable**

Whittier LakeFront Day Care Building 2405 Whittier Drive, Frederick, Maryland 21702



The Whittier LakeFront Day Care Building is nestled at the main entrance of the Whittier Planned Urban Development offering great convenience to the neighbors of Whittier and the surrounding communities. The Lake with beautiful walking and biking Paths offers an Optimal Office Environment for Employees and Customers.

The Day Care Center can be Leased with the Entire 9,000 SF or Sub-Dividable into Office / Medical Suites from 4,500 SF to 9,000 SF. Beautifully Built-Out with Private Restrooms is almost every Suite. Multiple Exterior Entrances. Numerous Free Parking Spaces. Existing Enclosed Playground Area.

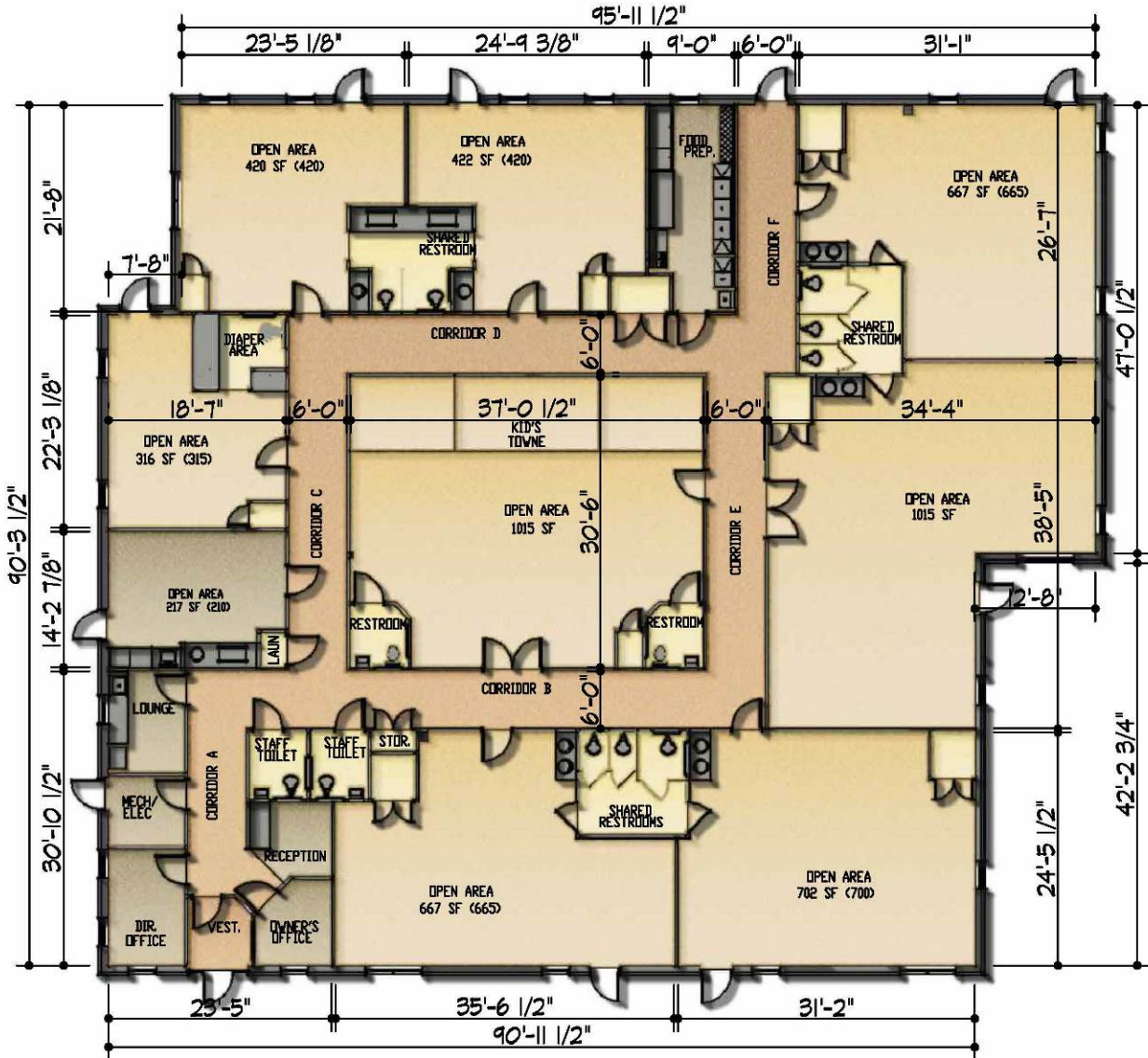
All information deemed reliable, but not guaranteed

FOR ADDITIONAL INFORMATION CONTACT:
Nancy Green - 240-529-0135
Email: Nancy@ngreen.com
Website: <http://www.ngreen.com>

Mackintosh Commercial Brokerage
262 W. Patrick Street
Frederick, Maryland 21701
Broker: 1-800-727-SOLD
Fax #: 1240-489-7932

Whittier LakeFront Day Care Building – Floor Plan

Entire 9,000 SF Building Can Be Leased As Office or Medical
or Sub-Dividable from 4,500 SF to 9,000 SF



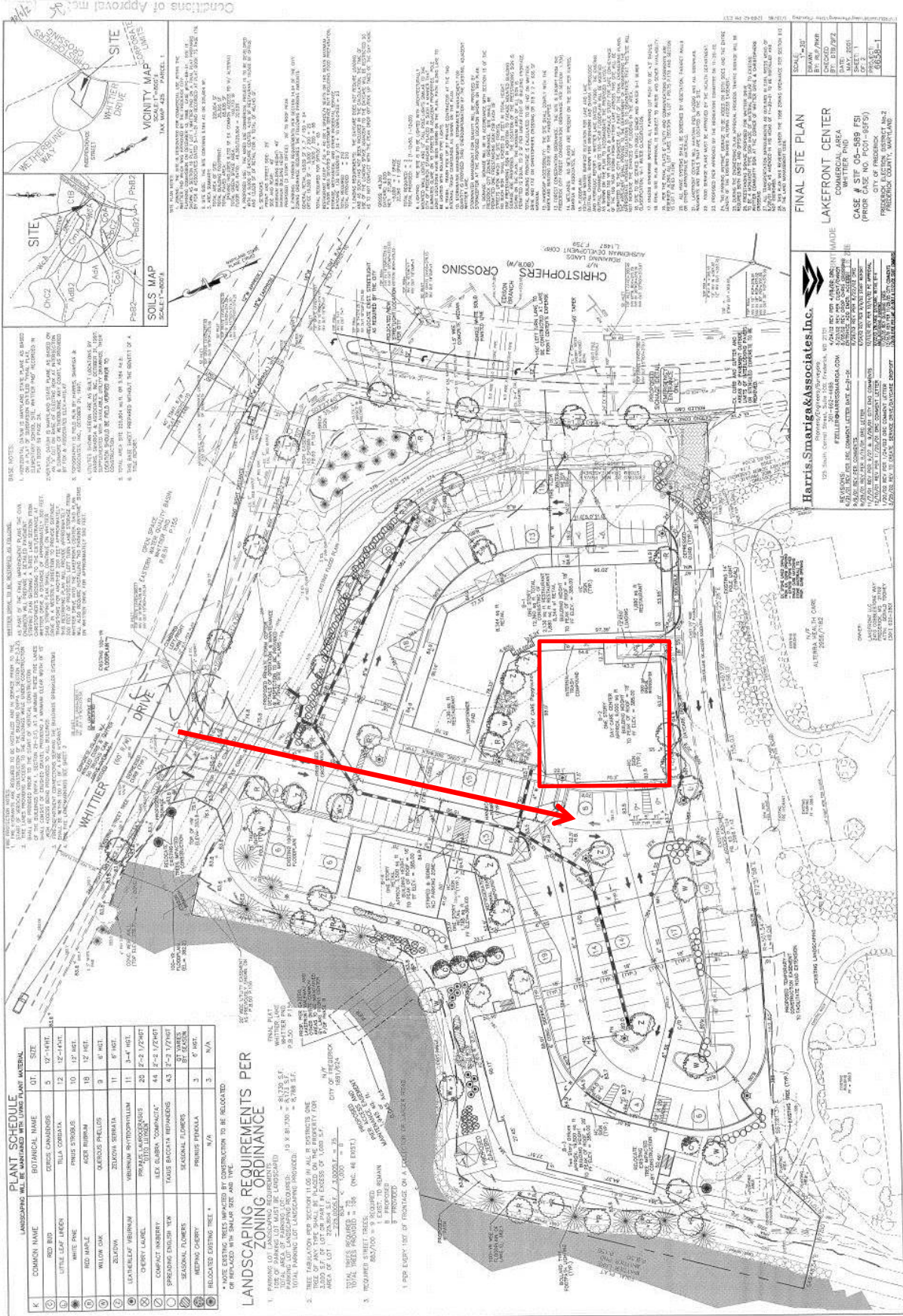
LAKEFRONT CENTER DAYCARE BUILDING

2405 WHITTIER DRIVE
FREDERICK, MARYLAND 21702



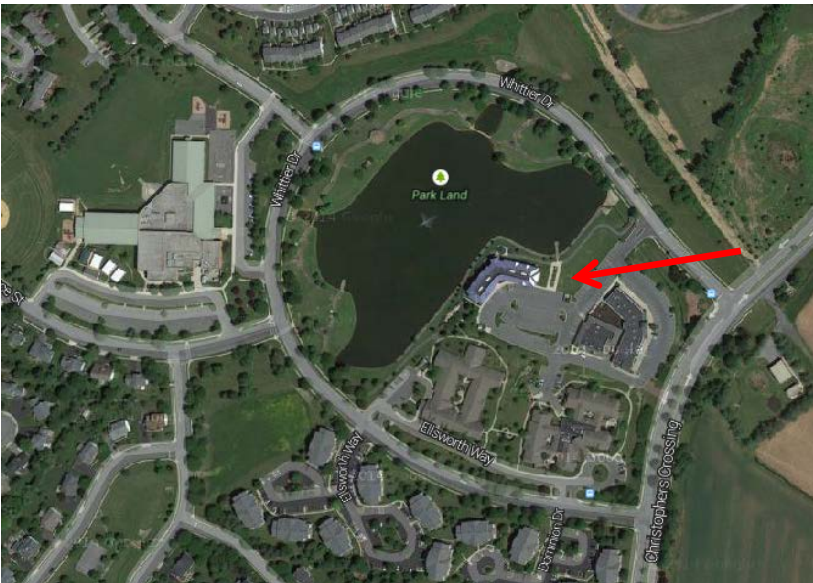
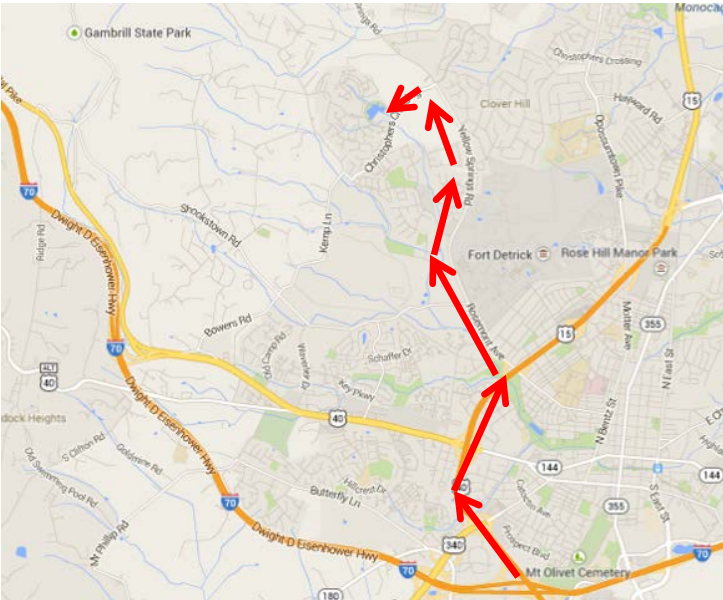
All information deemed reliable, but not guaranteed

Whittier LakeFront Day Care Building - Plat



Whittier Lake Front Center Directions:

From the I-70 and I-270 Intersection in Frederick, Drive North on Route 15 to Exit 14 (Rosemont). Exit onto Rosemont Avenue and travel West past Fort Detrick. Rosemont Avenue becomes Yellow Springs Road. Continue for approximately two miles to Christopher Crossings. Turn Left onto Christopher Crossing. Continue to LakeFront Shopping Center. Turn Right onto Whittier Drive and Left into Shopping Center Parking Lot. Continue Past Shopping Center to Day Care Building Behind the Shopping Center.



All information deemed reliable, but not guaranteed

FOR ADDITIONAL INFORMATION CONTACT:

Nancy Green - 240-529-0135

Email: Nancy@ngreen.com

Website: <http://www.ngreen.com>

Mackintosh Commercial Brokerage

262 W. Patrick Street

Frederick, Maryland 21701

Broker: 1-800-727-SOLD

Fax #: 1240-489-7932