



**MACKINTOSH, Inc.**  
COMMERCIAL BROKERAGE

**Lease-\$7.50 SF + NNN (\$2.66 SF)**

## 4841 Winchester Blvd. Frederick, Maryland



6,000 SF Flex/Warehouse building – Lease all or Subdivide  
Located in Stanford Industrial Park - Just off Route 15 - Close access to major Highways

3 Finished Bays Each with 24' Ceilings & Handicap Bathroom  
Ample Free Parking with 17+ Paved Spaces  
Comcast Cable to site with High Speed Internet Available

**Unit 1 – 1,500 SF - 12 x 14 OH Door – Glass Display Window & Pedestrian Door**

**Unit 2 – 1,500 SF - 12 x 14 OH Door – Glass Display Window & Pedestrian Door**

**Unit 3 – 3,000 SF - One 12 x 14 OH Door in Front and One 14 x 16 OH Door in Rear**

---

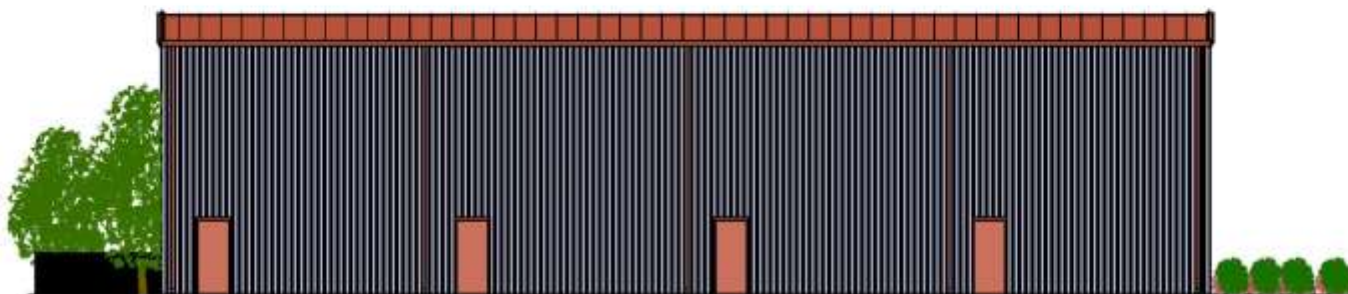
*All information deemed reliable, but not guaranteed.*

FOR ADDITIONAL INFORMATION CONTACT:  
Nancy Green  
Mackintosh Commercial  
240-529-0135

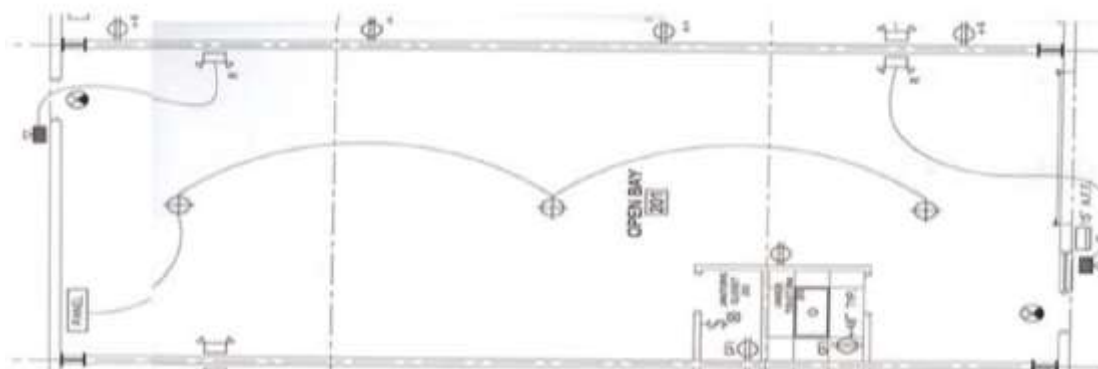
Mackintosh Commercial Brokerage  
262 W. Patrick Street  
Frederick, Maryland 21701  
Broker: 1-800-727-SOLD  
Fax #: 1240-489-7932  
Email: [Nancy@ngreen.com](mailto:Nancy@ngreen.com)  
Website: <http://www.ngreen.com/>



Front Elevation



Rear Elevation



1500 SF Floorplan

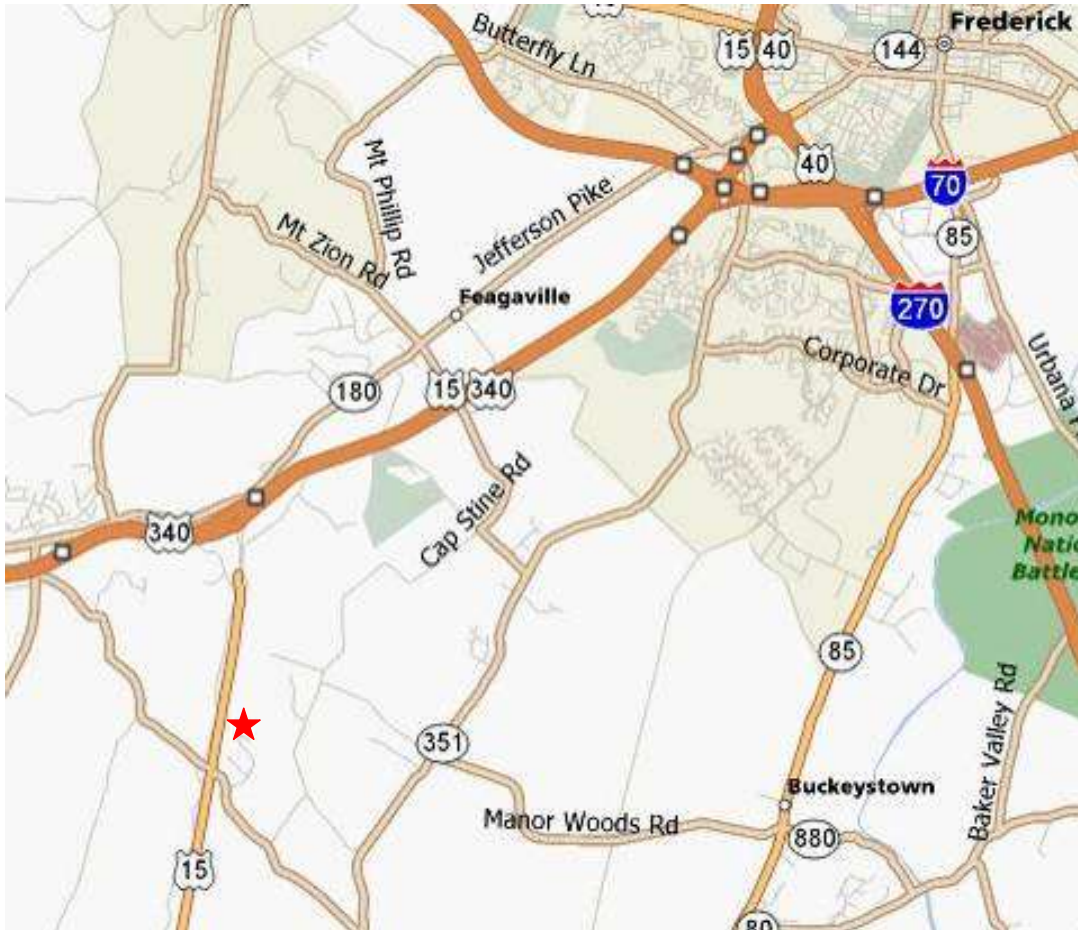
**4841 Winchester Blvd.**

All Information Deemed Reliable, but not guaranteed.



**4841 Winchester Blvd.**

All Information Deemed Reliable, but not guaranteed.



Directions:

From Frederick, take Route 15 south to left onto Mountville Rd, From Mountville Rd take a left onto Winchester Blvd, Follow Winchester Blvd to Property on your Right.

---

For Additional Info Call: Nancy Green- Call Direct: 240-529-0135  
Mackintosh Commercial Brokerage, 262 West Patrick Street, Frederick, Maryland 21701  
Fax #: 1240-489-7932 / Broker: 1-800-727-SOLD  
Email: Nancy@ngreen.com / Website: www.ngreen.com  
*All information deemed reliable, but not guaranteed.*